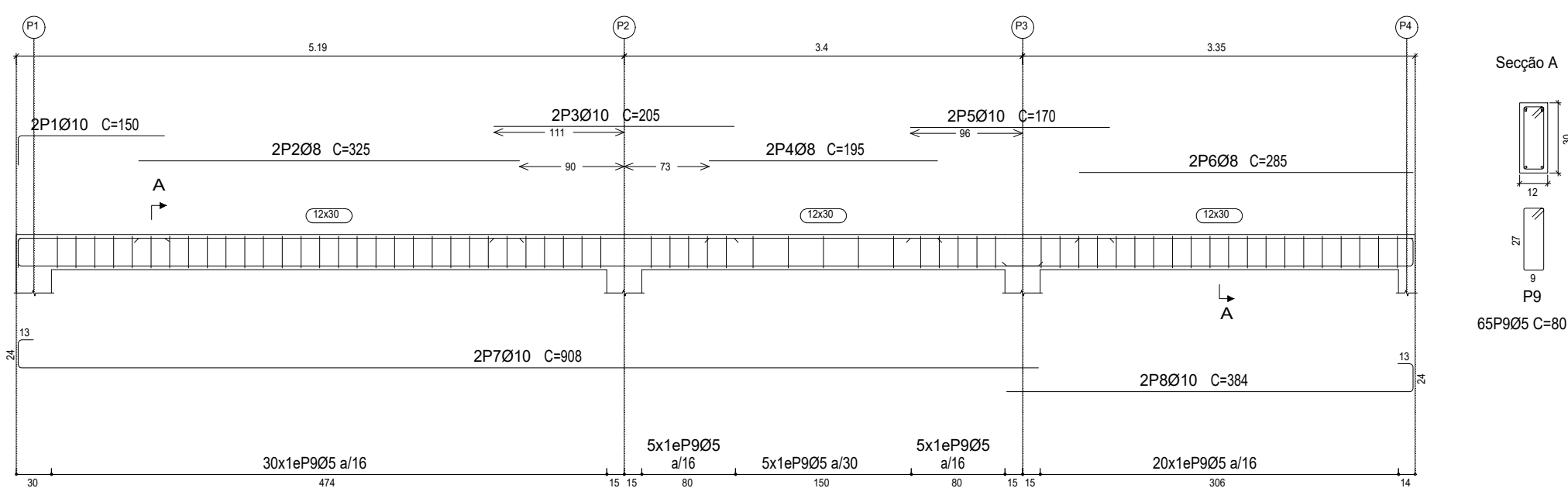
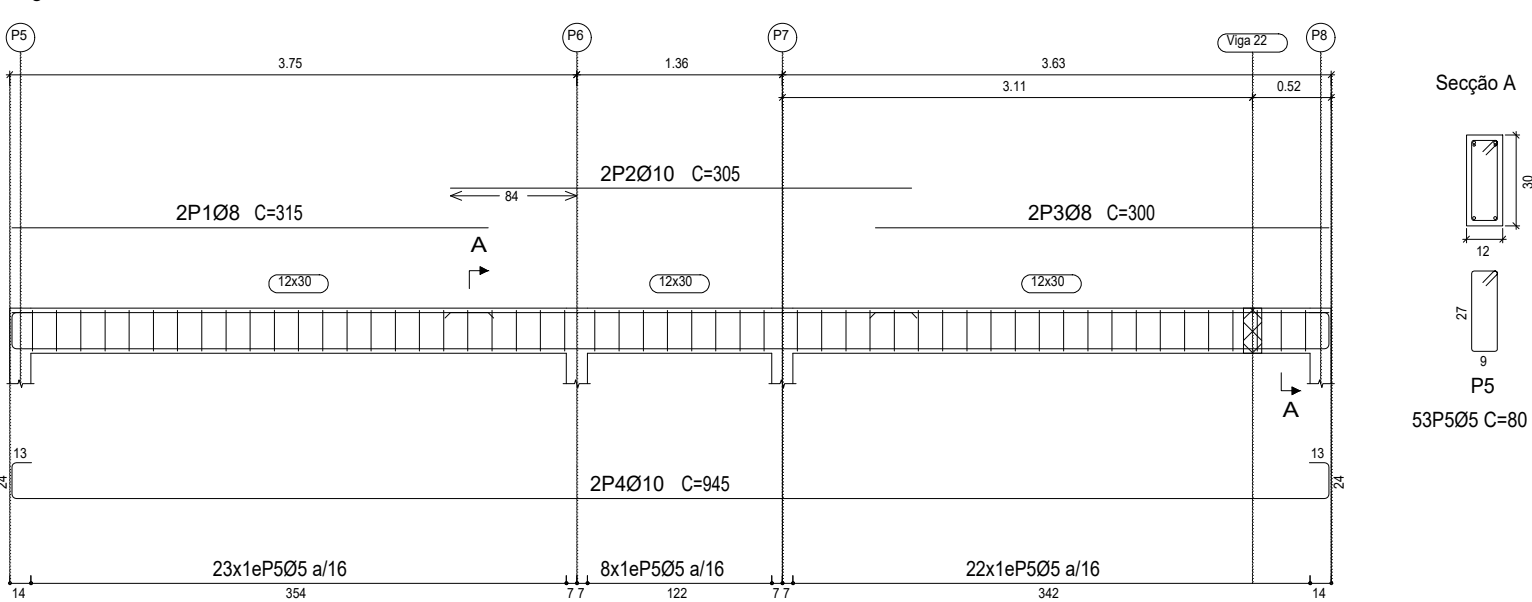


Viga 1

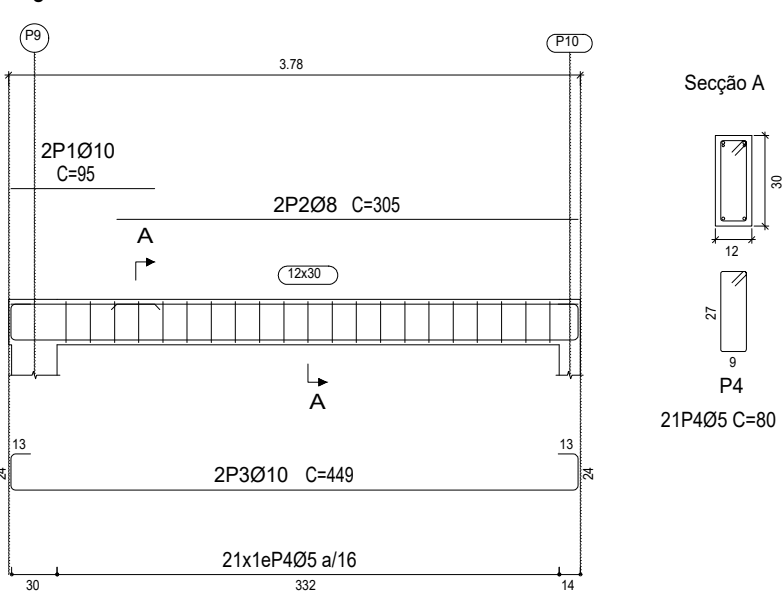


Cobertura
Desenho de vigas
Betão: C30, em geral
Aço em varões: CA-50 e CA-60
Aço em estribos: CA-50 e CA-60
Escala pórticos 1:50
Escala cortes 1:25
Escala aberturas 1:25

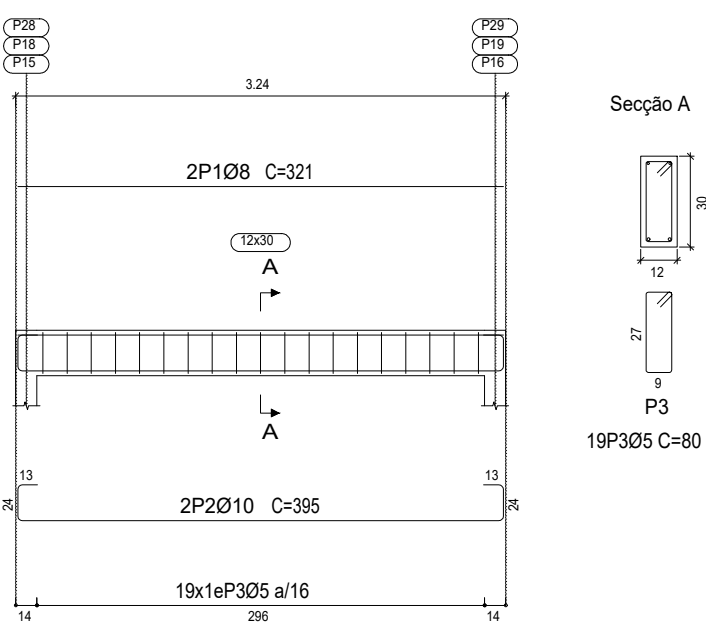
Viga 2



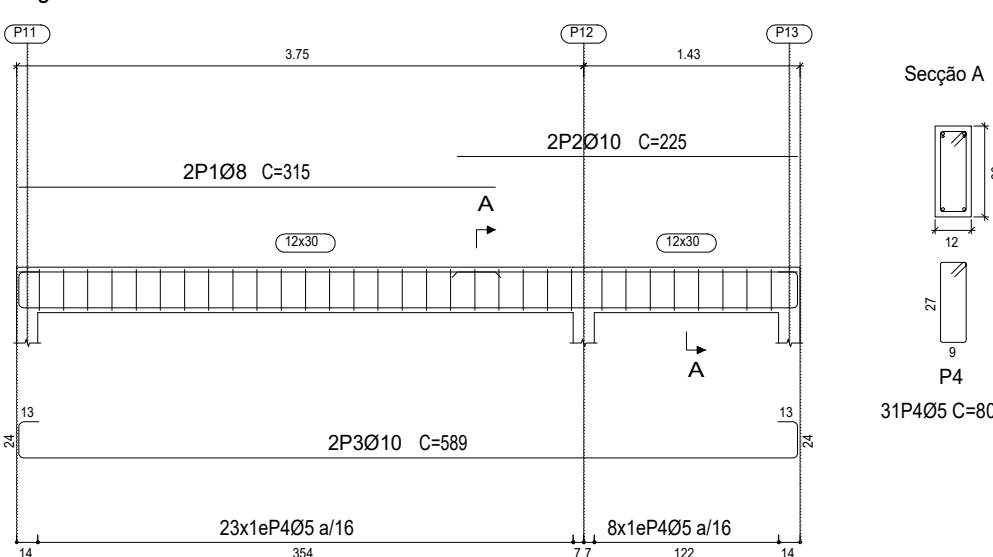
Viga 3



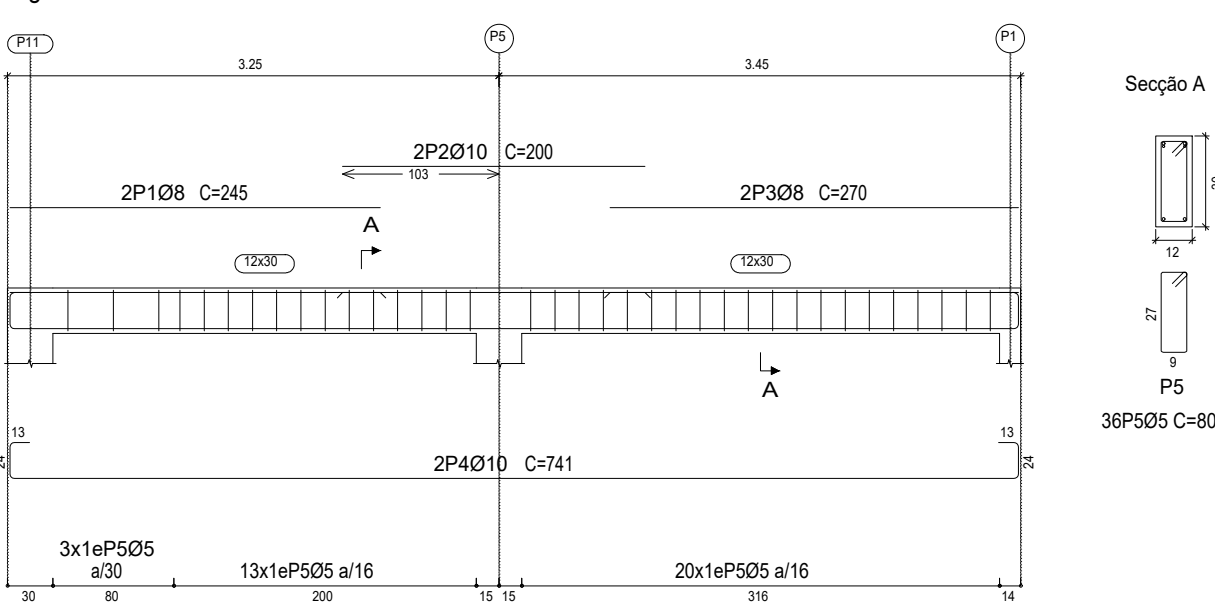
Viga 5
Viga 6
Viga 10



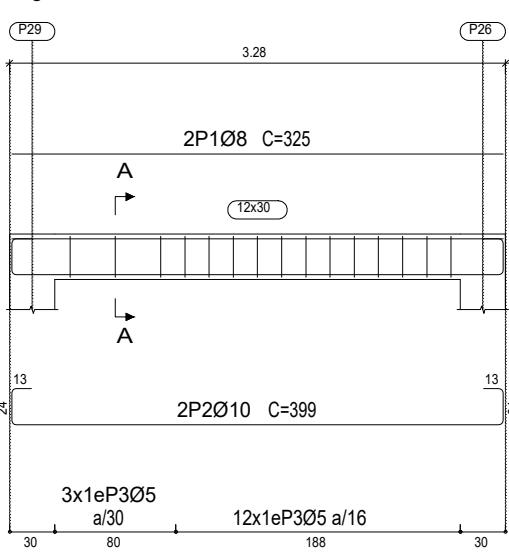
Viga 4



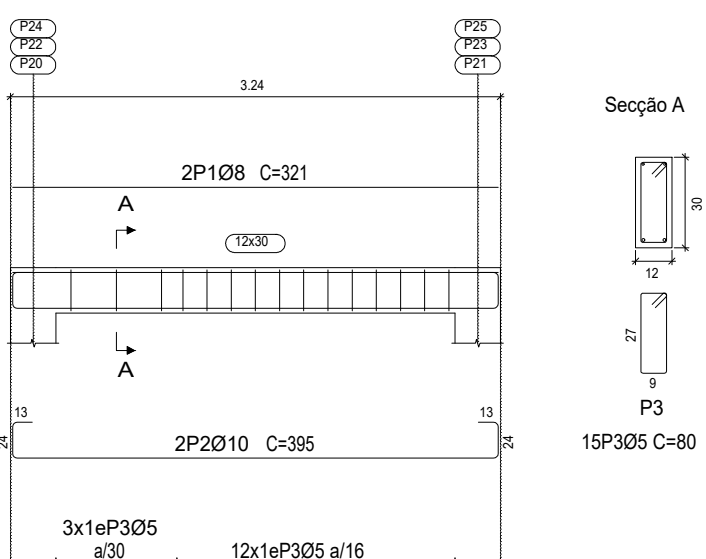
Viga 18



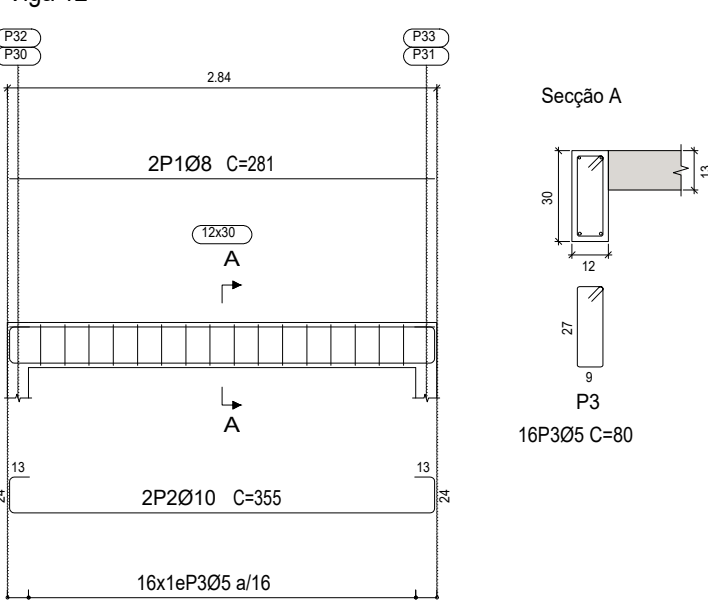
Viga 15



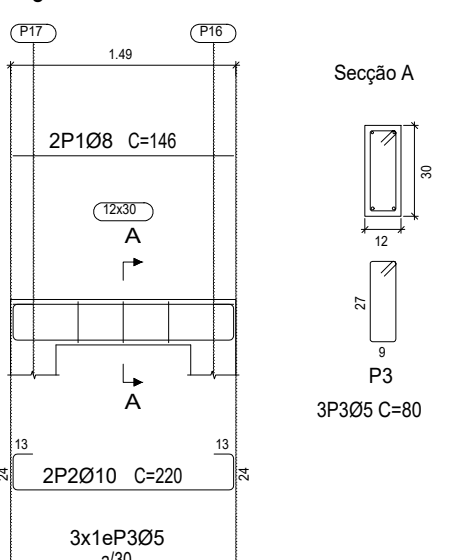
Viga 7
Viga 8
Viga 9



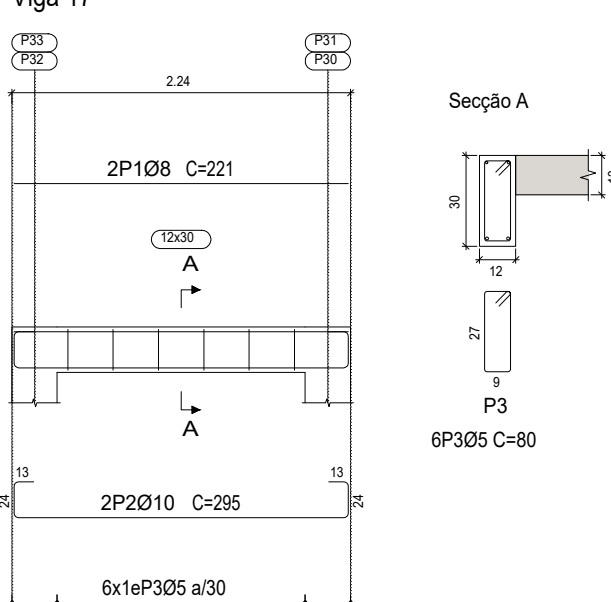
Viga 11
Viga 12



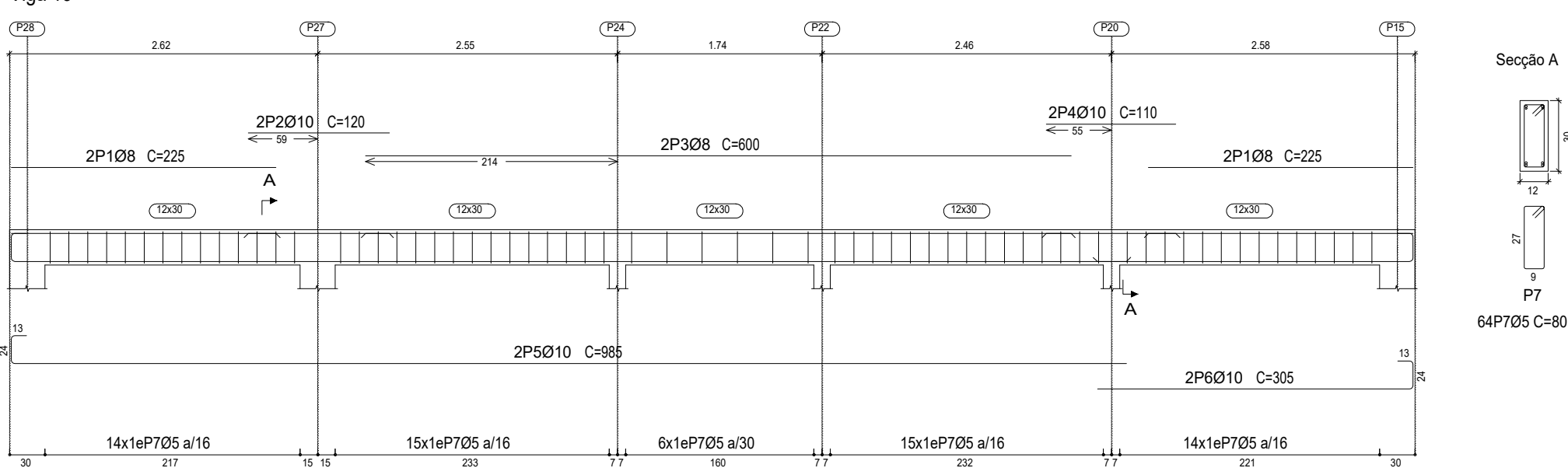
Viga 16



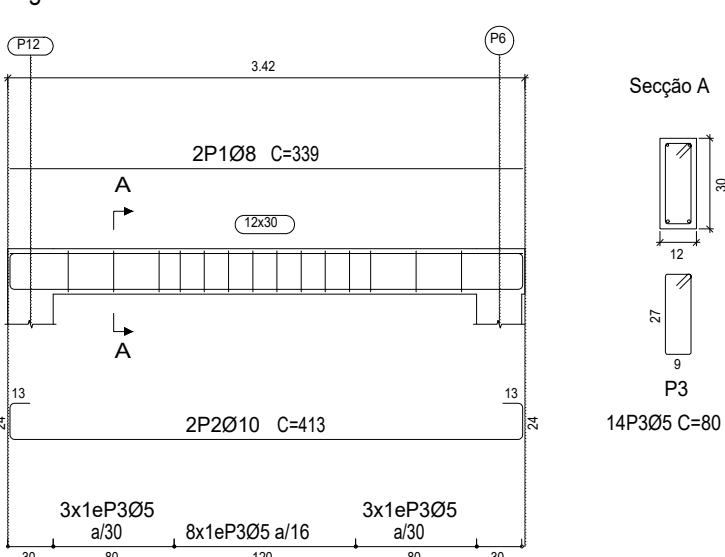
Viga 14
Viga 17



Viga 13



Viga 19



Resumo Aço		Comp. total	Peso+10%	Total
Pormenorização de vigas		(m)	(kg)	
CA-50	Ø8	178.5	78	
	Ø10	286.3	194	272
CA-60	Ø5	432.0	75	75
Total				347

Elemento	Pos.	Diâm.	Q.	Esquema (cm)	Comp. (cm)	Total (cm)	CA-50 (kg)	CA-60 (kg)
Viga 13	1	Ø8	4	225	225	900	3.6	
	2	Ø10	2	120	120	240	1.5	
	3	Ø8	2	600	600	1200	4.7	
	4	Ø10	2	110	110	220	1.4	
	5	Ø10	2	948	985	1970	12.1	
	6	Ø10	2	285	305	610	3.8	
	7	Ø5	64	8	80	5120		8.0
Total+10%:							29.8	8.8
Viga 16	1	Ø8	2	146	146	292	1.2	
	2	Ø10	2	145	220	440	2.7	
	3	Ø5	3	8	80	240	0.4	
Total+10%:							4.3	0.4
Viga 14+Viga 17	1	Ø8	2	221	221	442	1.7	
	2	Ø10	2	221	295	590	3.6	
	3	Ø5	6	8	80	480	0.8	
Total+10%:							5.8	0.9
Viga 19	1	Ø8	2	339	339	678	2.7	
	2	Ø10	2	339	413	826	5.1	
	3	Ø5	14	8	80	1120	1.8	
Total+10%:							8.6	2.0

Elemento	Pos.	Diâm.	Q.	Esquema (cm)	Comp. (cm)	Total (cm)	CA-50 (kg)	CA-60 (kg)
Viga 1	1	Ø10	2	125	150	300	1.8	
	2	Ø8	2	325	325	650	2.6	
	3	Ø10	2	305	205	410	2.5	
	4	Ø8	2	195	195	390	1.5	
	5	Ø10	2	170	170	340	2.1	
	6	Ø8	2	285	285	570	2.3	
	7	Ø10	2	871	908	1816	11.2	
	8	Ø10	2	347	384	768	4.7	
	9	Ø5	65	8	80	5200		8.2
Total+10%:							31.6	9.0
Viga 2	1	Ø8	2	315	315	630	2.5	
	2	Ø10	2	305	305	610	3.8	
	3	Ø8	2	300	300	600	2.4	
	4	Ø10	2	971	945	1890	11.6	
	5	Ø5	53	8	80	4240		6.7
Total+10%:							22.3	7.4
Viga 3	1	Ø10	2	85	95	190	1.2	
	2	Ø8	2	305	305	610	2.4	
	3	Ø10	2	315	449	898	5.5	
	4	Ø5	21	8	80	1680	2.6	
Total+10%:							10.0	2.9
Viga 4	1	Ø8	2	315	315	630	2.5	
	2	Ø10	2	225	225	450	2.8	
	3	Ø10	2	515	589	1178	7.3	
	4	Ø5	31	8	80	2480	3.9	
Total+10%:							13.9	4.3
Viga 5+Viga 6 Viga 10	1	Ø8	2	321	321	642	2.5	
	2	Ø10	2	321	395	790	4.9	
	3	Ø5	19	8	80	1520	2.4	
Total+10%:							8.1	2.6
Viga 7+Viga 8+Viga 9	1	Ø8	2	321	321	642	2.5	
	2	Ø10	2	321	395	790	4.9	
	3	Ø5	15	8	80	1200	1.9	
Total+10%:							8.1	2.1
Viga 11+Viga 12	1	Ø8	2	281	281	562	2.2	
	2	Ø10	2	281	355	710	4.4	
	3	Ø5	16	8	80	1280	2.0	
Total+10%:							7.3	2.2
Viga 15	1	Ø8	2	325	325	650	2.6	
	2	Ø10	2	325	399	798	4.9	
	3	Ø5	15	8	80	1200	1.9	
Total+10%:							14.6	4.4
Viga 18	1	Ø8	2	245	245	490	1.9	
	2	Ø10	2	200	200	400	2.5	
	3	Ø8	2	270	270	540	2.1	
	4	Ø10	2	987	741	1482	9.1	
	5	Ø5	36	8	80	2880	4.5	
Total+10%:							17.2	5.0
Ø5:							0.0	0.0
Ø8:							64.0	0.0
Ø10:							156.8	0.0
Total:							220.8	62.2



PREFEITURA MUNICIPAL DE PETROLÂNDIA

TIPOLOGIA:	Projeto - Reforma e Ampliação - PSF Apolônio Sales		
ENDEREÇO:	Projeto Apolônio Sales Petrolândia - Pe		
REFORMA		QUADRO DE ÁREAS:	INFORMAÇÕES:
		351,68m²	
CONTRATANTE:	Prefeitura Municipal de Petrolândia	CPF/CNPJ:	10.106.235/0001-16
CONTATO EMPRESA:		CONTRATO CONTRATANTE:	(87)3851-1156
ATUAÇÃO:	Projeto de Engenharia	REVISOR DO PROJETO:	
CAU/CREA:		DATA:	Agosto - 2025
		PRANCHA:	05/ 05
ESTRUTURA			